

IMAGE-LINK

reduce or eliminate your paper process



INTEGRATED DOCUMENT MANAGEMENT FOR SAGE MAS 90 & 200

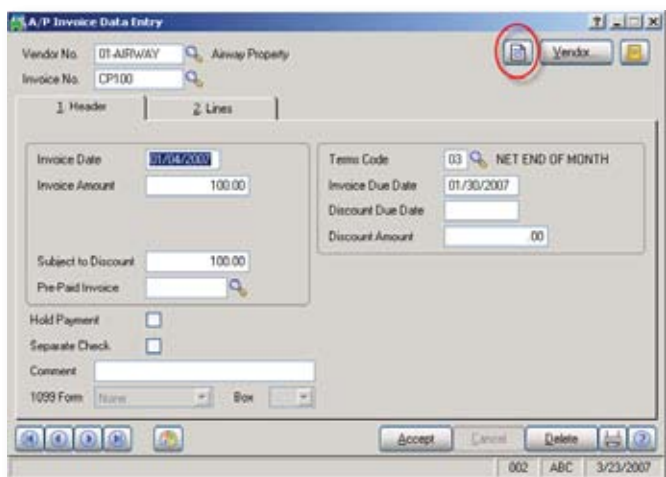
Computer Information Enterprises
A PurchaseSoft Company
www.compinfo.com



IMAGE-LINK

IMAGELINK software is a seamless, fully integrated Document Imaging Solution designed for users of **Sage's MAS 90/200** ERP accounting systems that have a desire to streamline the paper process within their business.

Once installed on your SQL server, **IMAGELINK** buttons appear on the applicable screens of your ERP accounting system. As a single-source, integrated application, scanned documents such as purchase orders and contracts, as well as, electronic files including email, spreadsheets and audio files can be dragged and dropped into **IMAGELINK**.



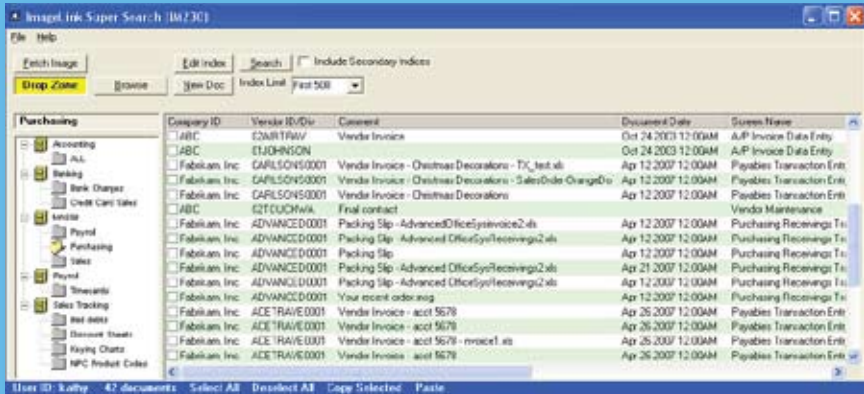
Increase the functionality of **IMAGELINK** by adding the following seamlessly integrated modules to your ERP accounting system.

Batch Processing provides a variety of flexible batch scanning and indexing options from either a centralized or remote location. Scanning of batched documents can be performed during the data entry process or completed at a later time.

Bar-coding provides a powerful tool to automatically index batches of documents.

Seamlessly Integrated Document Management

Super Search provides advanced search and retrieval functionality and makes documents visible to non-MAS 90/200 users.



Design Wizard is an interactive tool that supports the sophisticated development needs for the users of Super Search. This module expands document imaging to other departmental applications thereby providing a corporate-wide document management solution.

Installation and Support takes you smoothly through every phase from project planning to remote installation, training and on-going support. For more specialized solutions, **IMAGELINK** provides professional project management and customization services.

IMAGE-LINK

The difference is the integration

Since the introduction of **IMAGELINK** into the accounting market in 1996, we have grown our customer base to over eight hundred licensed users of our product.

IMAGE-**LINK**

- Seamlessly integrated into your **Sage MAS90/200** ERP accounting system
- Easily installed and maintained
- Easy to learn – launches from a button on your MAS 90/200 screen
- With add-on modules and flexible processes, **IMAGELINK** grows as you grow

For more information or a demonstration of **IMAGELINK** please contact your Sage partner or contact us directly at:
sales@compinfo.com or call: 949-579-9552